



**IPICO SPORTS**

**ELITE READER**

**For more information please contact:**

**IPICO SPORTS**

**311 SW Water Street, Suite 206**

**Peoria, Illinois 61602 USA**

**Tel: 309 672 6442**

**E-mail: [plockwood@mercurysportsgroup.com](mailto:plockwood@mercurysportsgroup.com)**

## IPICO SPORTS: CARRYING CASES FOR TRANSPORTATION

The reader is packaged in a Rugged Road Aluminum Case, 285mm H x 325mm W x 370mm L. All fixings are in aluminum or stainless steel to minimize corrosion over time.



*Figure 8: Road case box1*

# IPICO SPORTS Elite Reader

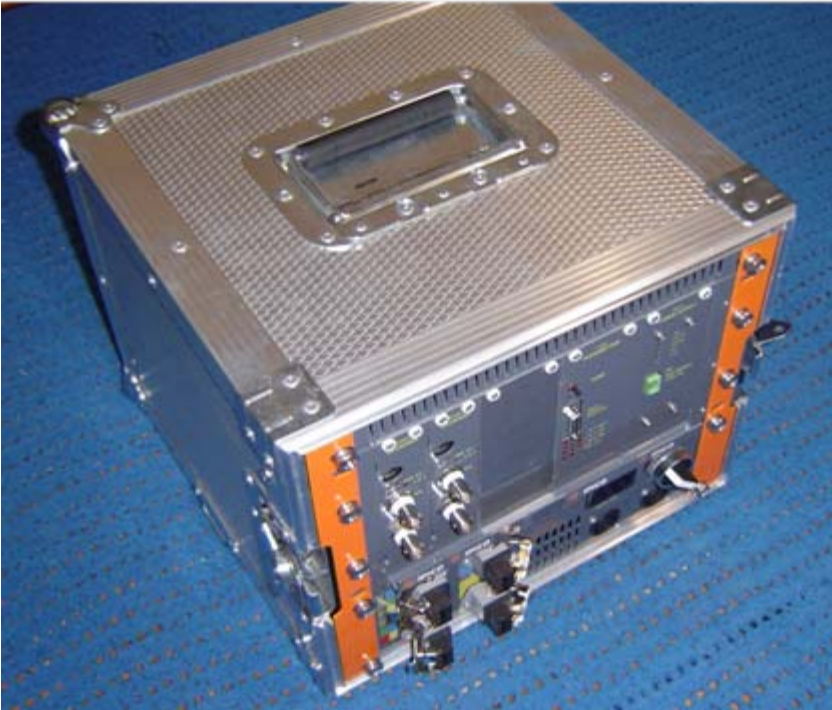




Figure 1: STK Elite reader

## SUMMARY OF FACILITIES

- Capability to drive 4 reading mats (2mx1m each), equivalent to an 8 meters timing line for one reader, or 4 meters with a second 4 meter line for backup. With 2 readers a 16 meters timing line is possible.
- Data can be stored on an internal flash drive (with battery backup)
- Ethernet port (RJ45) to communicate between a computer and the reader (Optional WIFI or RS485).
- Internal power supply by battery for mobile application
- External power supply: 12VDC or 220VAC (must be specified when ordering)
- External connectors for supplementary power supply battery
- Battery management card: beeps on low voltage or incorrect input polarity, voltage indicator
- Only one On/Off switch for the whole system
- Input (RS485) for the storage of data from a single Ipico Sports Lite reader
- LEDs and buzzer for tag detection.
- Optional Plug-in DSP(s) for better detection of tags in electromagnetic noisy environment
- Automatic tuning of the system
- Aluminum skin/plywood Road Case
- Venting on bottom and top of reader for hot climates (like Australia and Africa).

A User Manual is available in pdf format.

Consumption: 3Amps

Internal battery: 12V, 17Ah, 6Kg

External power supply: 12Vdc

Weight: 18Kg

Dimensions: 285mm H x 325mm W x 370mm L

# IPICO SPORTS: FRONT PANEL OF ELITE READER

All the cable connections on the reader are done on the front panel. All the visual indicators are also on the front panel. The face plate of each unit is powder coated zinc annealed steel.

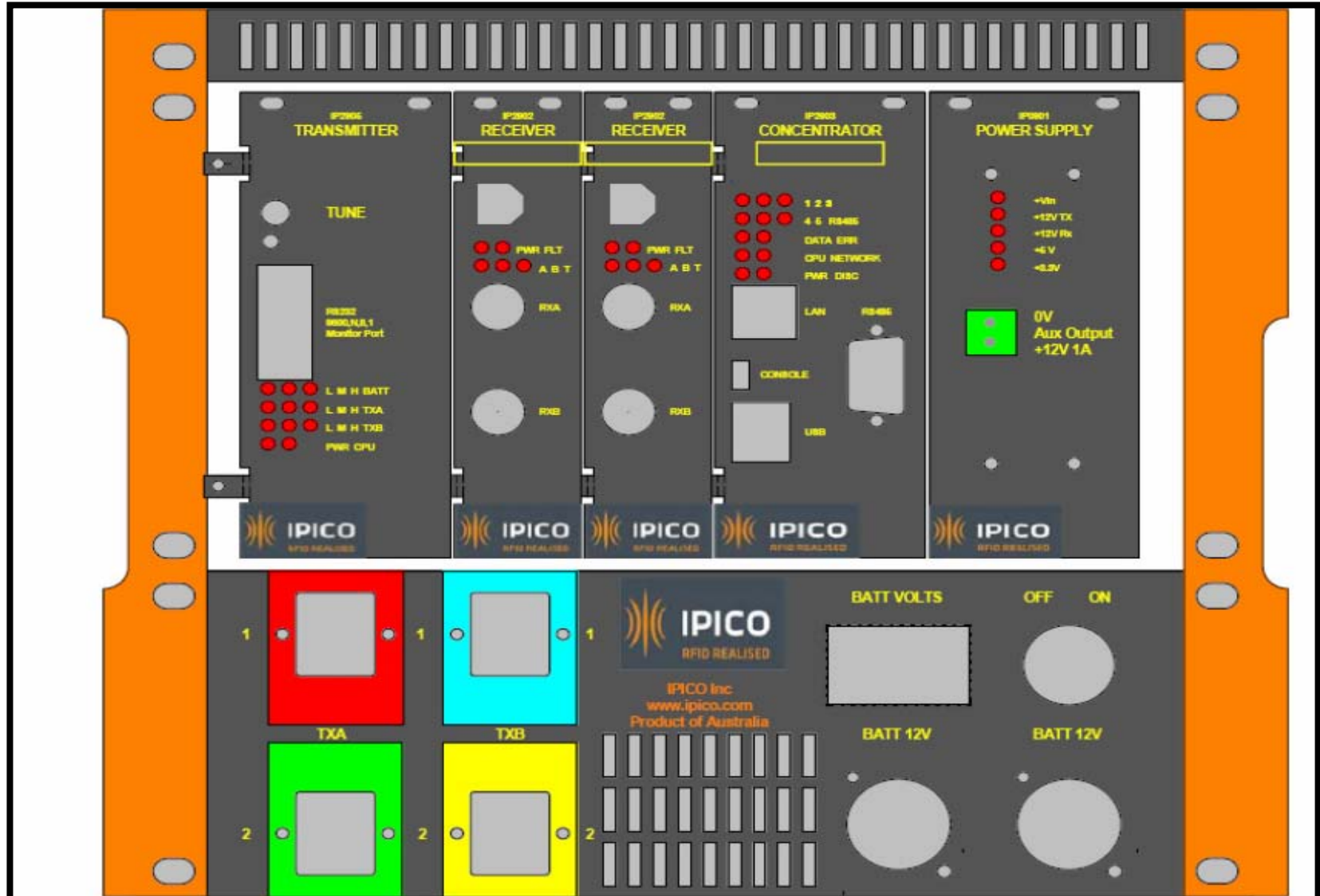


Figure 2: STK Elite reader Front panel